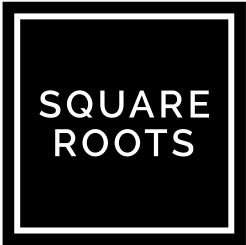


# DUPLEX 004

WATERWAY GROUND FLOOR & 1<sup>ST</sup> FLOOR



LEWISHAM

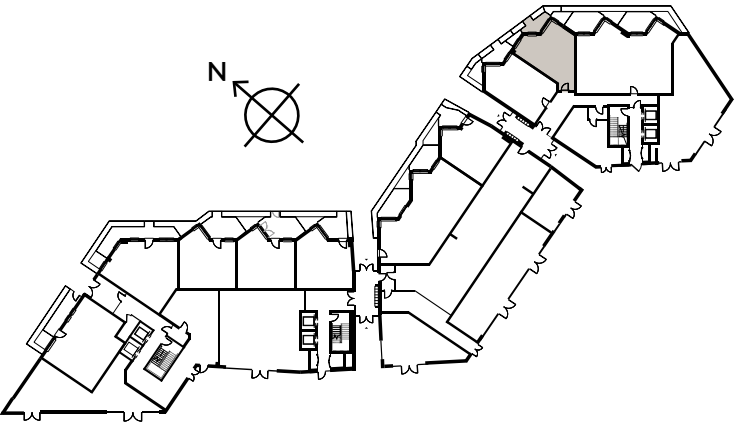
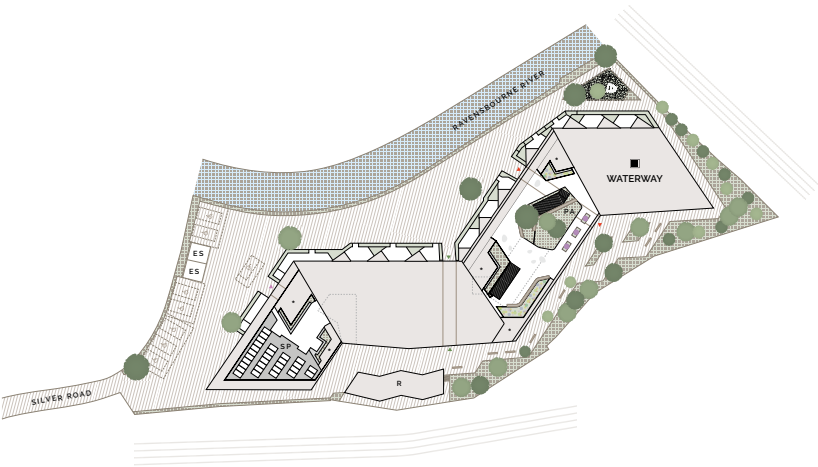
SE13



LOWER



UPPER



## LOWER FLOOR

Living/Kitchen/Dining	7.63m x 6.27m	25'0" x 20'7"
-----------------------	---------------	---------------

Terrace	3.21m x 2.62m	10'6" x 8'7"
---------	---------------	--------------

## UPPER FLOOR

Bedroom 1	3.99m x 3.69m	13'1" x 12'1"
-----------	---------------	---------------

Bedroom 2	5.05m x 2.83m	16'6" x 9'3"
-----------	---------------	--------------

Ceiling heights may vary with areas below 2.3 meters, please speak to a member of the sales team for more information.

Floorplans shown for Square Roots Lewisham are for approximate measurements only. Exact layouts and sizes may vary. All measurements may vary within a tolerance of +/-50mm. The dimensions are not intended to be used for carpet sizes, appliance sizes or items of furniture. Furniture layouts are indicative only. Kitchen layout indicative only. Please ask Sales Consultant for further information.