

3 BEDROOM TERRACE HOUSE

Cambridge Road, Whetstone, LE8 6LF

Plots 27, 28, 29, 30, 31, 39, 40, 41, 42 & 43



CGI Drawing of a typical terrace plot



3 Bedroom Terrace House		
Kitchen/dining	5.16m x 4.43m	16'11" x 14'6"
Living	4.72m x 4.43m	15'6" x 14'6"
Bedroom 1	4.43m x 3.34m	14'6" x 10'11"
Bedroom 2	4.31m x 2.17m	14'2" x 7'1"
Bedroom 3	2.92m x 2.14m	9'7" x 7'0"
Bathroom	2.17m x 2.03m	7'1" x 6'8"

Total Floor Area: 88.12m² - 948.53 sq.ft

Please note: All dimensions are taken from the widest and longest points of each room. Some properties will be 'handed' (mirror image) to floorplan shown.

Specification

- Fitted kitchen with oven, hob & extractor
- Bathroom with shower over bath
- Double glazed windows
- Carpets & flooring throughout
- Gas central heating
- Turfed rear garden
- Parking
- NHBC warranty

Please note: CGI's are for illustrative purposes only; external finishes including roof tile colours, brick, stone, render and landscaping may vary between plots. Properties may also be built 'handed' (mirror image) of those illustrated. Midland Heart reserves the right to alter and change certain aspects of a property - therefore it is recommended that you speak to a sales consultant for further details. All dimensions are taken from the widest and longest points of each room; they are approximate and should not be used for carpet sizes, appliance spaces and furniture. These particulars do not form part of a contract or warranty.

For further details contact our sales team on:

0800 44 55 67

or email:

sales@midlandheart.org.uk



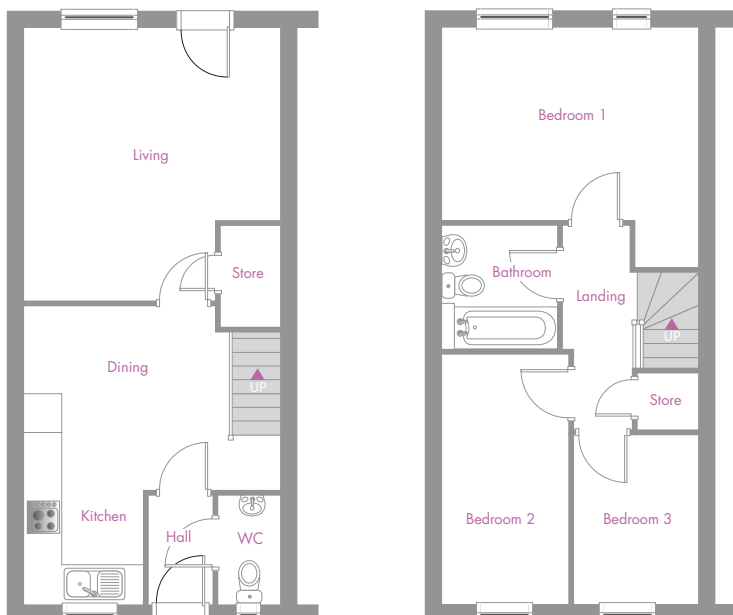
3 BEDROOM TERRACE HOUSE

Cambridge Road, Whetstone, LE8 6LF

Plots 32, 33 & 34



CGI Drawing of a typical terrace plot



3 Bedroom Terrace House		
Kitchen/dining	5.16m x 4.43m	16'11" x 14'6"
Living	4.72m x 4.43m	15'6" x 14'6"
Bedroom 1	4.43m x 3.34m	14'6" x 10'11"
Bedroom 2	4.31m x 2.17m	14'2" x 7'1"
Bedroom 3	2.92m x 2.14m	9'7" x 7'0"
Bathroom	2.17m x 2.03m	7'1" x 6'8"

Total Floor Area: 88.12m² - 948.53 sq.ft

Please note: All dimensions are taken from the widest and longest points of each room. Some properties will be 'handed' (mirror image) to floorplan shown.

Specification

- Fitted kitchen with oven, hob & extractor
- Bathroom with shower over bath
- Double glazed windows
- Carpets & flooring throughout
- Gas central heating
- Turfed rear garden
- Parking
- NHBC warranty

Please note: CGI's are for illustrative purposes only; external finishes including roof tile colours, brick, stone, render and landscaping may vary between plots. Properties may also be built 'handed' (mirror image) of those illustrated. Midland Heart reserves the right to alter and change certain aspects of a property – therefore it is recommended that you speak to a sales consultant for further details. All dimensions are taken from the widest and longest points of each room; they are approximate and should not be used for carpet sizes, appliance spaces and furniture. These particulars do not form part of a contract or warranty.

For further details contact
our sales team on:

0800 44 55 67

or email:

sales@midlandheart.org.uk

midland
heart

SITE PLAN

Cambridge Road, Whetstone, LE8 6LF



Key	Housetype	Plot Number
	3 Bedroom Terrace House	27, 28, 29, 30, 31, 32, 33, 34, 39, 40, 41, 42 & 43

For further details contact our sales team on:

0800 44 55 67 or email: sales@midlandheart.org.uk

Please note CGI's are for illustrative purposes only; external finishes including roof tile colours, brick, stone, render and landscaping may vary between plots. Properties may also be built 'handed' (mirror image) of those illustrated. Midland Heart reserves the right to alter and change certain aspects of a property – therefore it is recommended that you speak to a sales consultant for further details. All dimensions are taken from the widest and longest points of each room; they are approximate and should not be used for carpet sizes, appliance spaces and furniture. These particulars do not form part of a contract or warranty.

