



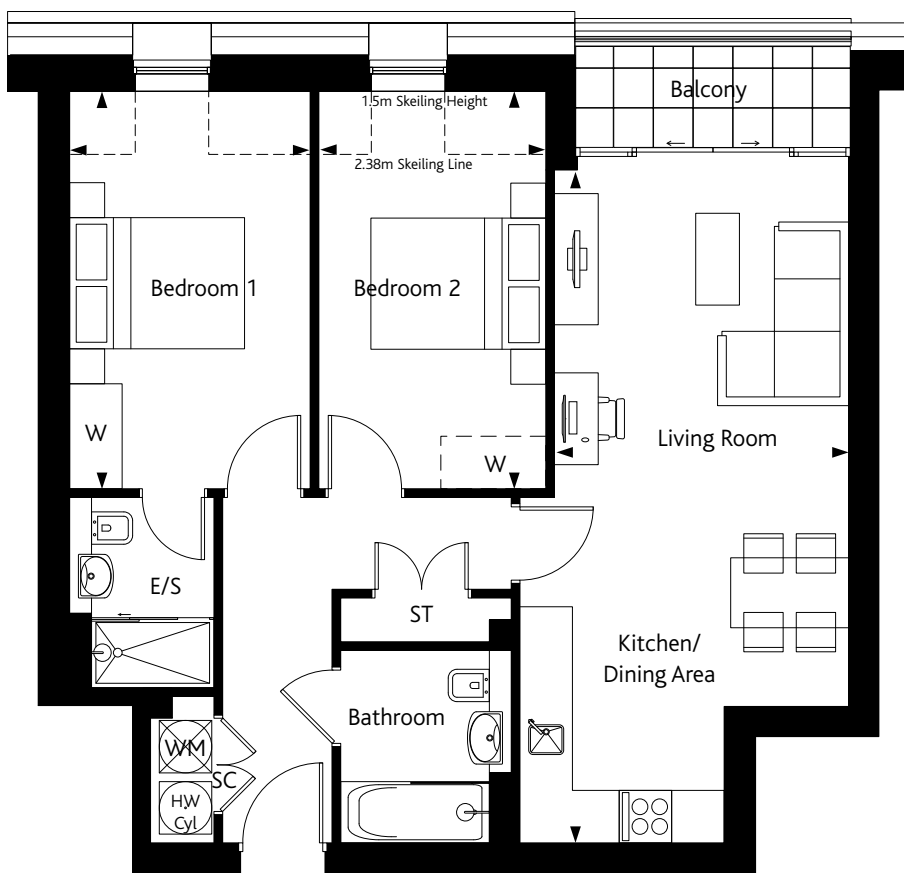
LONDON SQUARE

WATFORD

WD24

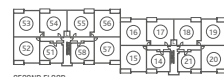
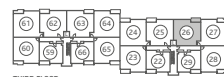
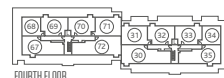
# THE BEDFORD

## 2 BEDROOM APARTMENT Plot 26



Kitchen/Living/Dining Room	7.65m x 3.32m	25'1" x 10'11"
Bedroom 1	4.50m x 2.70m	14'9" x 8'10"
Bedroom 2	4.50m x 2.55m	14'9" x 8'4"

* Handed Plots	W = Included Wardrobe	—
ST = Store	W = Optional Wardrobe	---
TD = Tumble Dryer	WM = Washing Machine	
RL = Roof Light	HW Cyl = Hot Water Cylinder	
SC = Service Cupboard	CS = Cycle Store	
RS = Refuse storage		



Floorplans are not to scale, dimensions may vary between plots and kitchen layouts are indicative only. Please speak to your Sales Advisor for details.

➤ YOUR CLOSEST BUS STOP IS A 1 MINUTE WALK THAT CAN TAKE YOU TO WATFORD TOWN CENTRE IN 19 MINUTES.

