

Westlow Heath

2 & 3 bedroom mews homes



Typical mews street scene

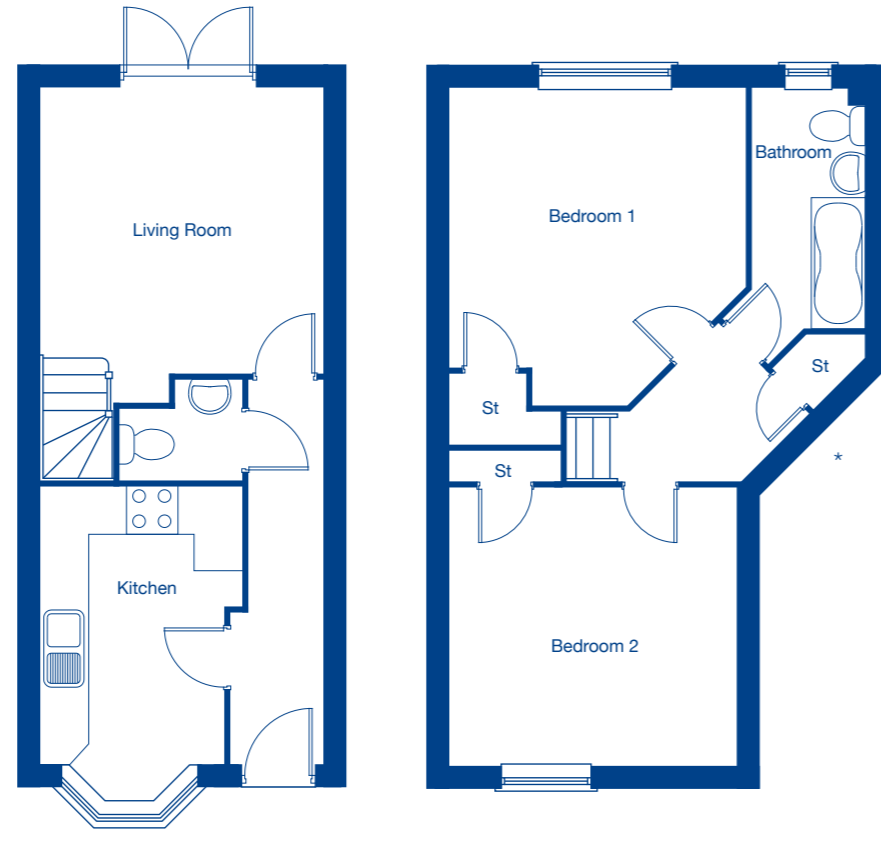
JONES
HOMES

The Handforth – 2 bedroom mews home



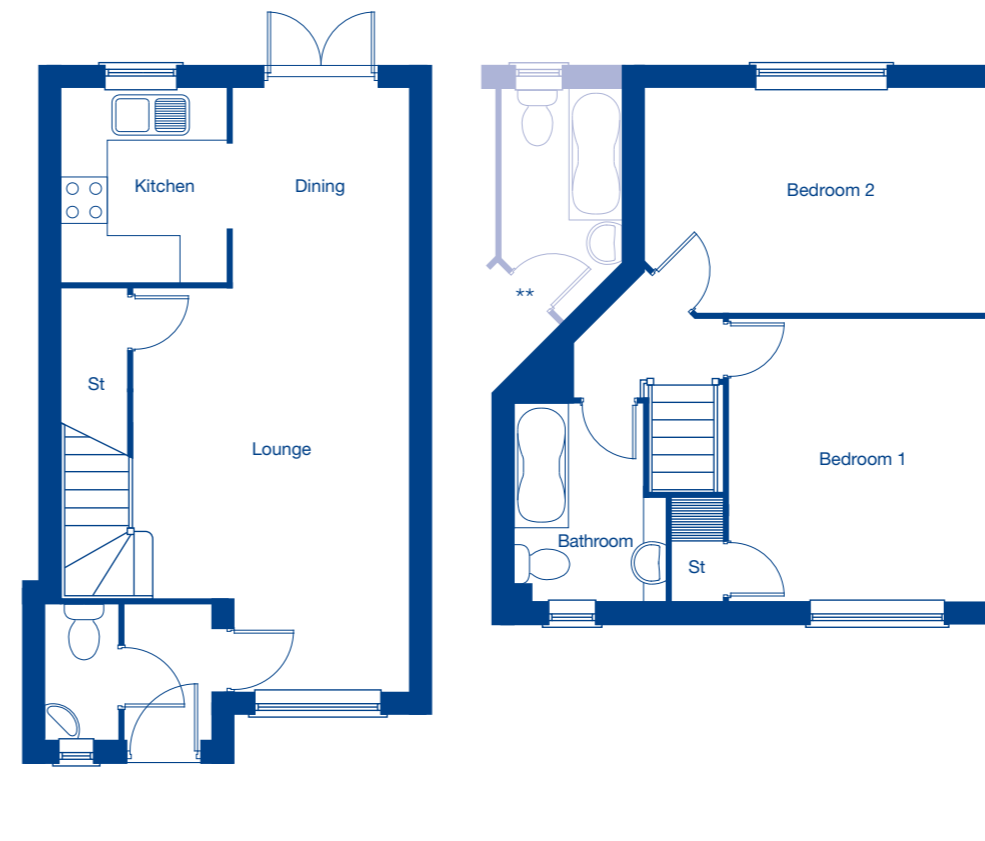
Living Room	4.67m x 3.73m	15'4" x 12'3"
Kitchen/Dining	3.73m x 3.37m	12'3" x 11'1"
Bedroom 1	3.73m x 3.16m	12'3" x 10'4"
Bedroom 2	3.73m x 3.34m	12'3" x 10'11"

The Sutton – 2 bedroom mews home



Living Room	3.67m x 3.62m	12'1" x 11'10"
Kitchen	3.55m x 2.56m	11'8" x 8'5"
Bedroom 1	4.05m x 3.77m	13'3" x 12'4"
Bedroom 2	3.62m x 3.55m	11'10" x 11'8"

The Cranford – 2 bedroom mews home



Lounge	5.29m x 3.56m	17'4" x 11'8"
Kitchen	2.44m x 2.06m	8'0" x 6'9"
Dining	2.53m x 2.25m	8'4" x 7'4"
Bedroom 1	3.58m x 3.35m	11'9" x 11'0"
Bedroom 2	4.40m x 2.83m	14'5" x 9'4"

The Birch – 3 bedroom mews home



Living Room	4.59m x 4.47m	15'1" x 14'8"
Kitchen/Dining	4.59m x 2.87m	15'1" x 9'5"
Bedroom 1	3.83m x 2.65m	12'7" x 8'8"
Bedroom 2	3.52m x 2.65m	11'7" x 8'8"
Bedroom 3	3.02m x 2.09m	9'11" x 6'10"

[†]Plus bay

* For alternate first floor layout to adjoining Sutton - ask our Sales Advisor for details.

** Alternate bathroom layout to adjoining Cranford - ask our Sales Advisor for details.

These floor plans and CGI are for guidance and illustrative purposes only and do not form part of any contract. All room sizes are approximate to maximum dimensions and some plots may be subject to additional gable or bay windows. Please ask our Sales Advisor for details on specification and plot specific street scenes. Every effort has been taken to ensure these plans are as accurate as possible at time of printing. However, Jones Homes reserves the right to vary details as may be necessary and without notice.

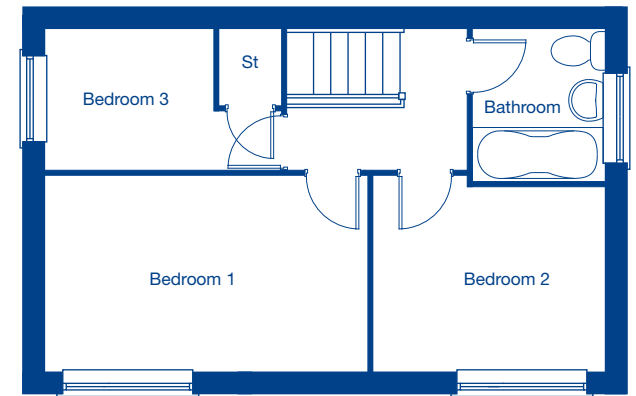
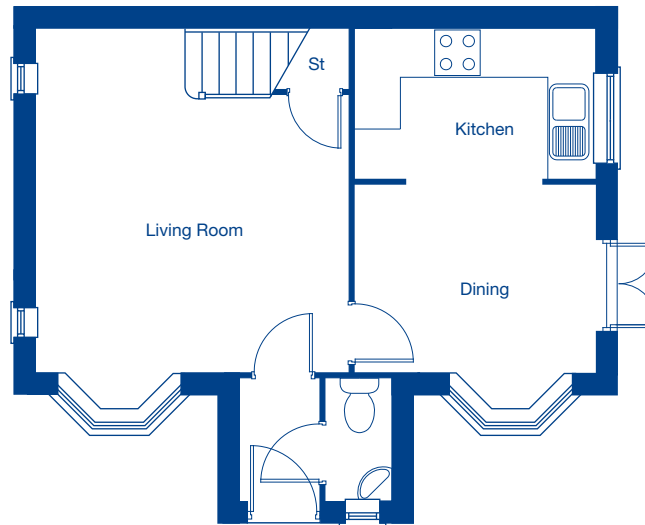
The Thornton – 3 bedroom mews home

Ground Floor

Living Room	4.45m [†] x 4.08m	14'7" [†] x 13'5"
Kitchen	3.14m x 1.93m	10'4" x 6'4"
Dining	3.14m x 2.42m [†]	10'4" x 8'0" [†]

First Floor

Bedroom 1	4.21m x 2.55m	13'10" x 8'4"
Bedroom 2	3.01m x 2.55m	9'10" x 8'4"
Bedroom 3	3.08m x 1.81m	10'1" x 5'11"



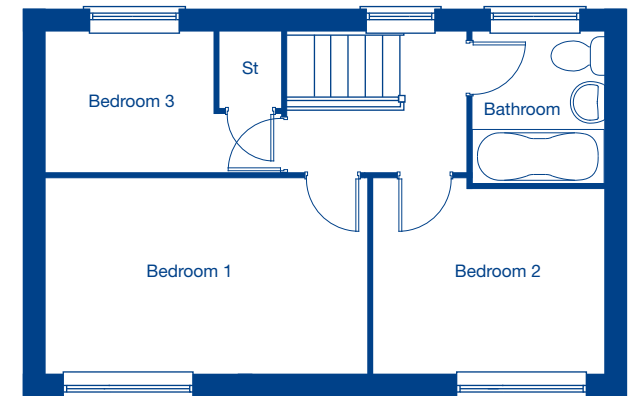
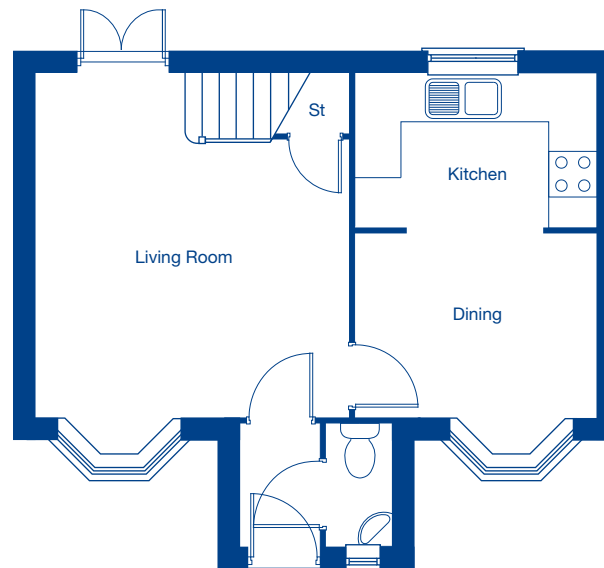
The Thornton B – 3 bedroom mews home

Ground Floor

Living Room	4.45m [†] x 4.08m	14'7" [†] x 13'5"
Kitchen	3.14m x 1.93m	10'4" x 6'4"
Dining	3.14m x 2.42m [†]	10'4" x 8'0" [†]

First Floor

Bedroom 1	4.21m x 2.55m	13'10" x 8'4"
Bedroom 2	3.01m x 2.55m	9'10" x 8'4"
Bedroom 3	3.08m x 1.81m	10'1" x 5'11"



[†] Plus bay