



Plots on this development have been designed for individuality, therefore materials and design will vary. CGI shows Plots 55 & 56. Please ask our Sales Advisor for plot specific details.

## The Calder – Plots 26-27

4 bedroom semi-detached home with detached single garage, open plan kitchen and dining area, utility, spacious living room and en suite to bedroom 1.

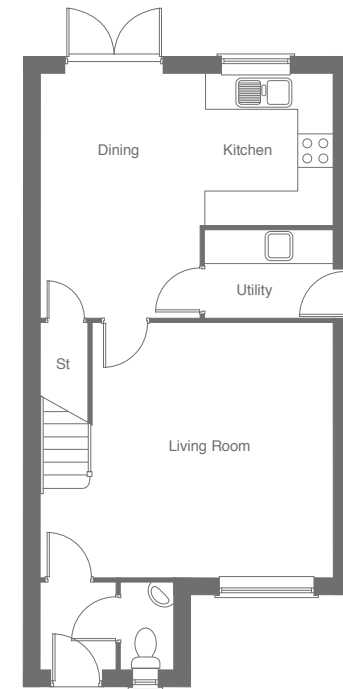
### Ground Floor

Living Room	5.12m x 4.48m	16'10" x 14'9"
Kitchen/Dining	5.12m x 4.32m	16'10" x 14'2"
Detached Single Garage	5.64m x 2.62m	18'6" x 8'7"

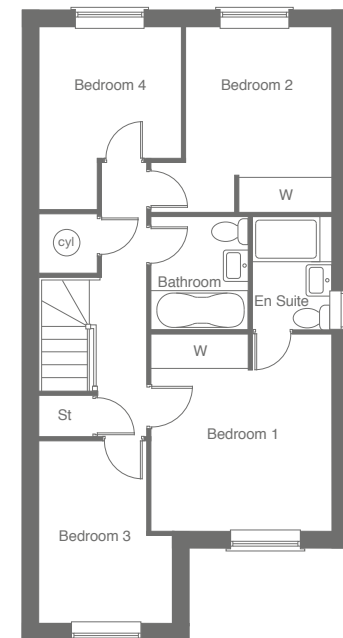
### First Floor

Bedroom 1	3.48m x 3.18m	11'5" x 10'5"
Bedroom 2	3.24m x 2.55m	10'8" x 8'5"
Bedroom 3	3.20m x 2.27m	10'6" x 7'5"
Bedroom 4	3.19m x 2.48m	10'6" x 8'1"

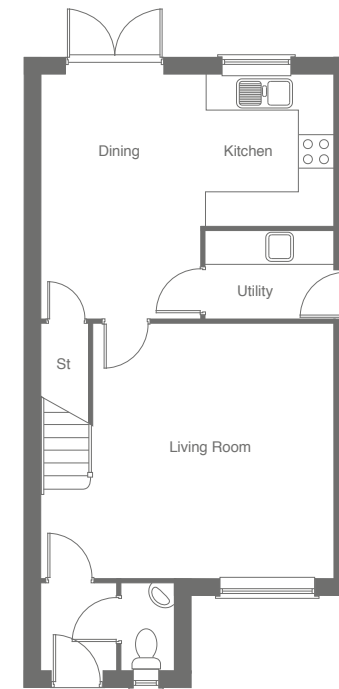
These floor plans and CGI are for guidance and illustrative purposes only and do not form part of any contract. All room sizes are approximate to maximum dimensions and some plots may be subject to additional gable or bay windows. Please ask our Sales Advisor for details on specification and plot specific street scenes. Every effort has been taken to ensure these plans are as accurate as possible at time of printing. However, Jones Homes reserves the right to vary details as may be necessary and without notice.



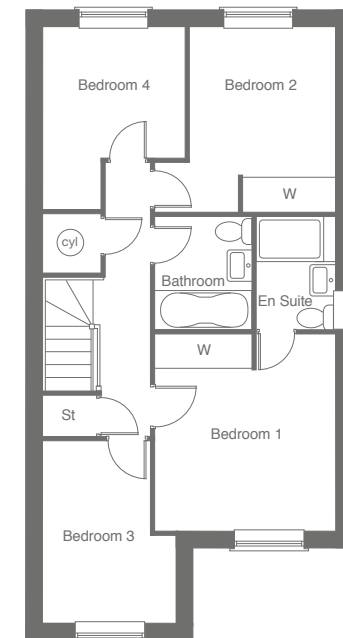
Ground Floor



First Floor



Ground Floor



First Floor

## The Calder – Plots 55-56

4 bedroom semi-detached home with detached single garage, open plan kitchen and dining area, utility, spacious living room and en suite to bedroom 1.

### Ground Floor

Living Room	5.12m x 4.48m	16'10" x 14'9"
Kitchen/Dining	5.12m x 4.32m	16'10" x 14'2"
Detached Single Garage	5.64m x 2.62m	18'6" x 8'7"

### First Floor

Bedroom 1	3.48m x 3.18m	11'5" x 10'5"
Bedroom 2	3.24m x 2.55m	10'8" x 8'5"
Bedroom 3	3.20m x 2.27m	10'6" x 7'5"
Bedroom 4	3.19m x 2.48m	10'6" x 8'1"