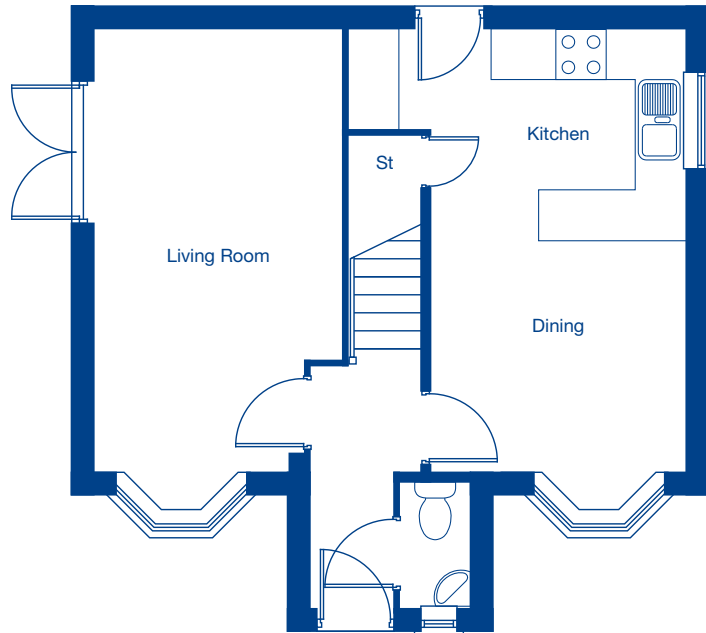


Moorfield Park

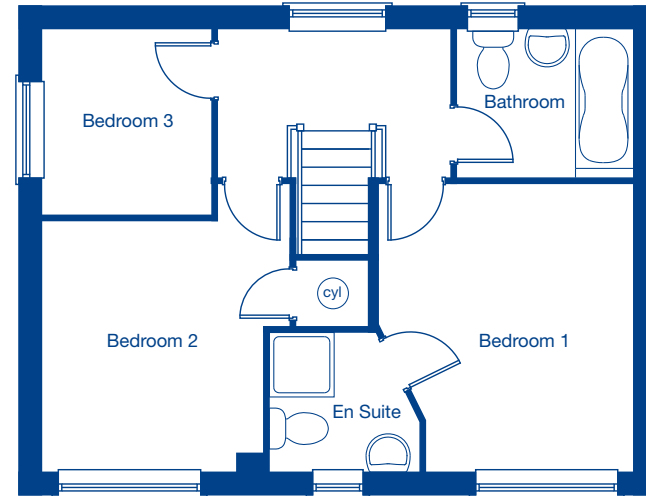
The Huxley Aspect A – 3 bedroom detached home





Ground Floor

Living Room	5.45m† x 3.05m	17'11"† x 10'0"
Kitchen/Dining	5.45m† x 4.17m	17'11"† x 13'8"



First Floor

Bedroom 1	3.55m x 3.14m	11'8" x 10'4"
Bedroom 2	3.09m x 2.72m	10'2" x 8'11"
Bedroom 3	2.27m x 2.08m	7'5" x 6'10"

†Plus bay

These floor plans and images are for guidance and illustrative purposes only and do not form part of any contract. All room sizes are approximate to maximum dimensions and some plots may be subject to additional gable or bay windows. Please ask our Sales Advisor for details on specification and plot specific street scenes. Every effort has been taken to ensure these plans are as accurate as possible at time of printing. However, Jones Homes reserves the right to vary details as may be necessary and without notice. JHL4468/December 2019.