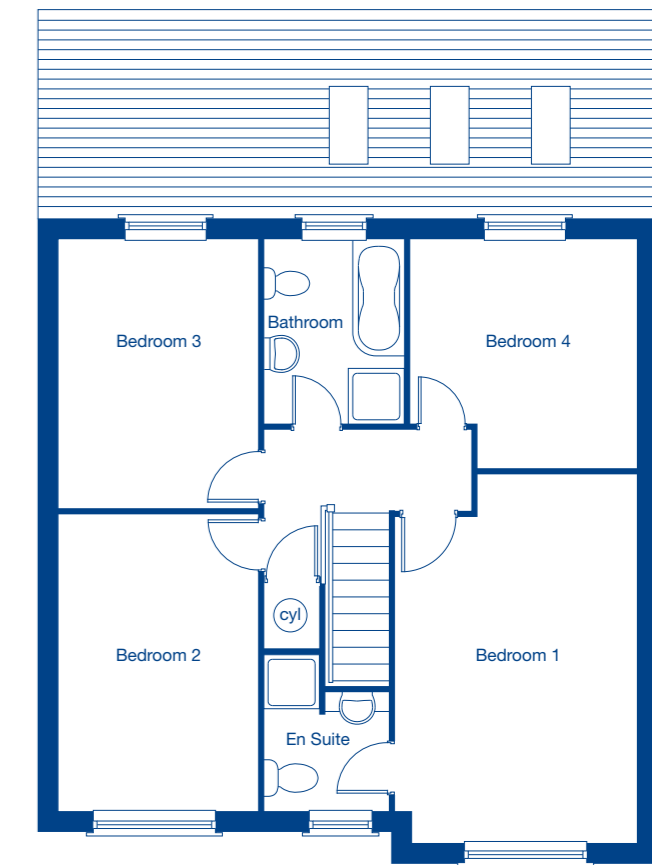


**Ground Floor**

Living Room	6.15m x 3.34m	20'2" x 10'11"
Kitchen/Family/Dining	8.20m x 5.94m	26'11" x 19'6"
Garage	5.36m x 2.66m	17'7" x 8'9"



**First Floor**

Bedroom 1	5.20m x 3.40m	17'1" x 11'2"
Bedroom 2	4.15m x 2.79m	13'8" x 9'2"
Bedroom 3	3.80m x 2.79m	12'6" x 9'2"
Bedroom 4	3.19m x 3.18m	10'6" x 10'5"

--- Skylights

These floor plans and images are for guidance and illustrative purposes only and do not form part of any contract. All room sizes are approximate to maximum dimensions and some plots may be subject to additional gable or bay windows. Please ask our Sales Advisor for details on specification and plot specific street scenes. Every effort has been taken to ensure these plans are as accurate as possible at time of printing. However, Jones Homes reserves the right to vary details as may be necessary and without notice. JHY3167/March 2020.