

THE THUNDERSLEY

Gross Internal Area 243 sq m | 2,614 sq ft

4 BEDROOM DETACHED HOME
PLOT 64



Computer generated image of plot 64 is indicative only

GROUND FLOOR

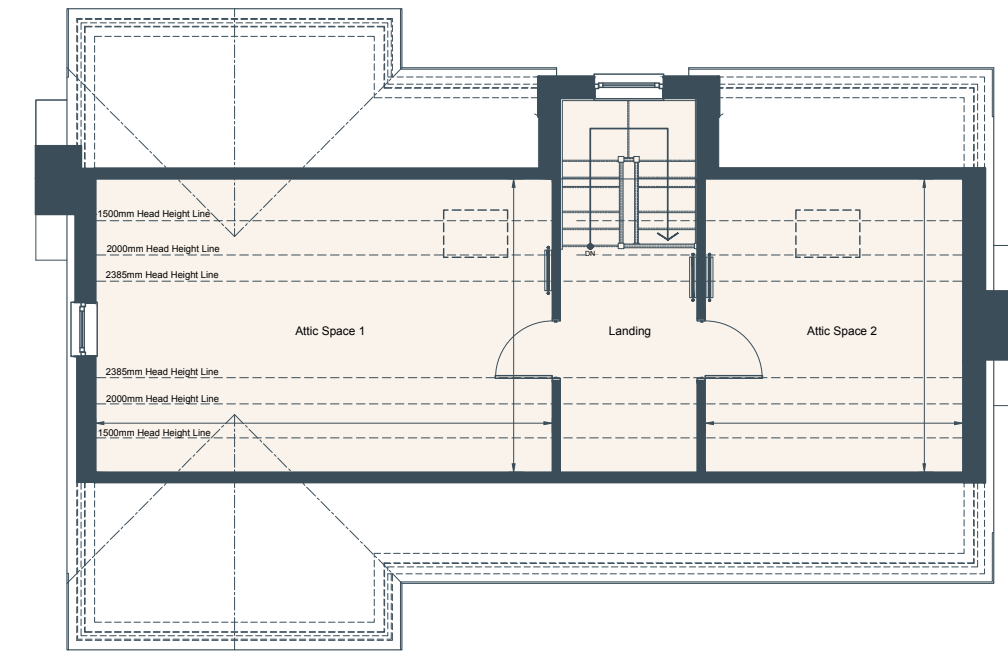
Living Room	6.67m x 3.79m	21'11" x 12'5"
Kitchen/Dining/Family	8.58m x 6.32m	28'2" x 20'9"

FIRST FLOOR

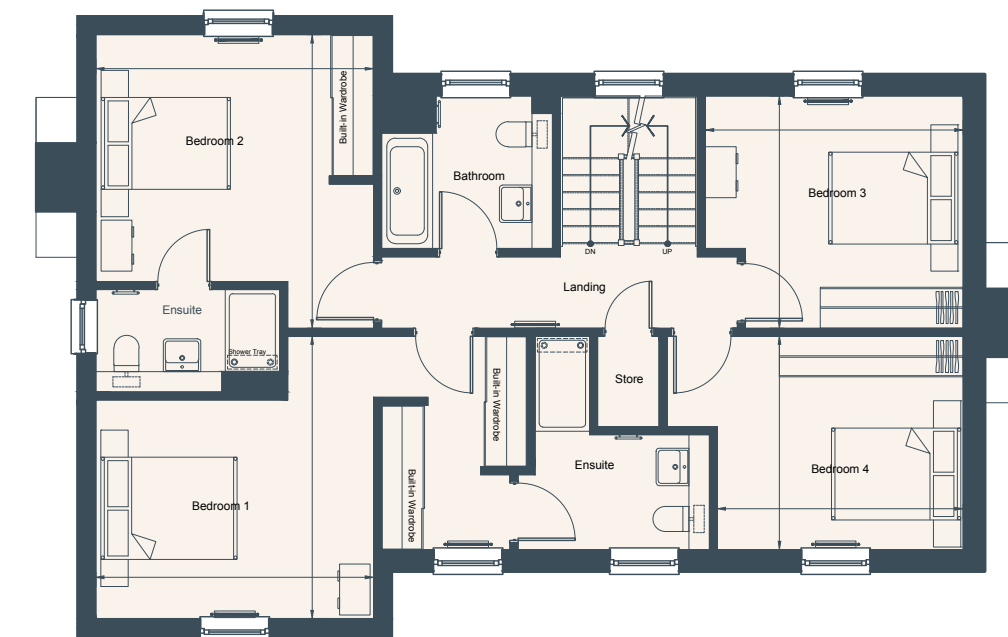
Bedroom 1	4.15m x 4.08m	13'7" x 13'5"
Bedroom 2	4.31m x 4.08m	14'2" x 13'5"
Bedroom 3	3.79m x 3.41m	12'5" x 11'2"
Bedroom 4	3.61m x 3.14m	11'10" x 10'4"

SECOND FLOOR

Attic Space 1	6.71m x 4.31m	22'0" x 14'2"
Attic Space 2	4.31m x 3.79m	14'2" x 12'5"



SECOND FLOOR



FIRST FLOOR



GROUND FLOOR



The information in this document is intended as a guide only and is subject to change without prior notice. Accordingly, due to the City & Country policy of continual improvement, the finished product may vary from the information provided and City & Country reserves the right to amend the specification. All dimensions stated are approximate only with maximum dimensions and may alter through the construction phase with interior finishes. You are therefore advised not to order any carpets, appliances or other goods which depend upon accurate dimensions before carrying out a check measure within your reserved property. Floorplans not to scale. October 2022.