

# The Chrishall (II)

Three bedroom terrace home

Plots 47, 48\*, 51, 52\*

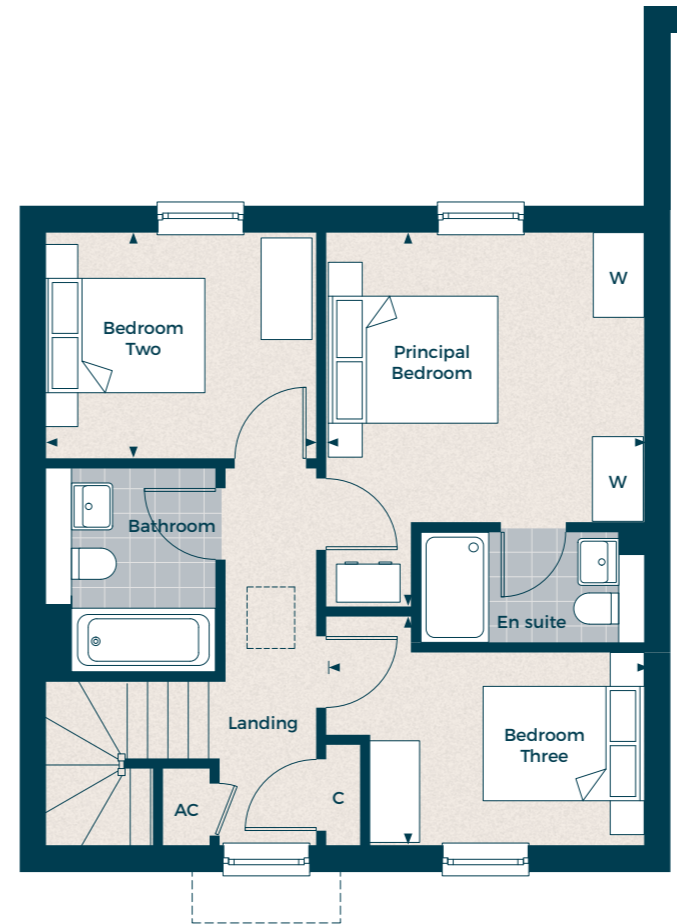
Gross Internal Area: 102.10 sq m (1,098.99 sq ft)



## Key:

AC - Airing Cupboard C - Cupboard W - Built-in Wardrobe - Loft Access Hatch ▲ - Front Entrance ◀▶ - Depicts where measurements have been taken from

\* Denotes handed plot. Individual plots vary in size, please ask the Sales Consultant for details.



## First Floor

### Principal Bedroom

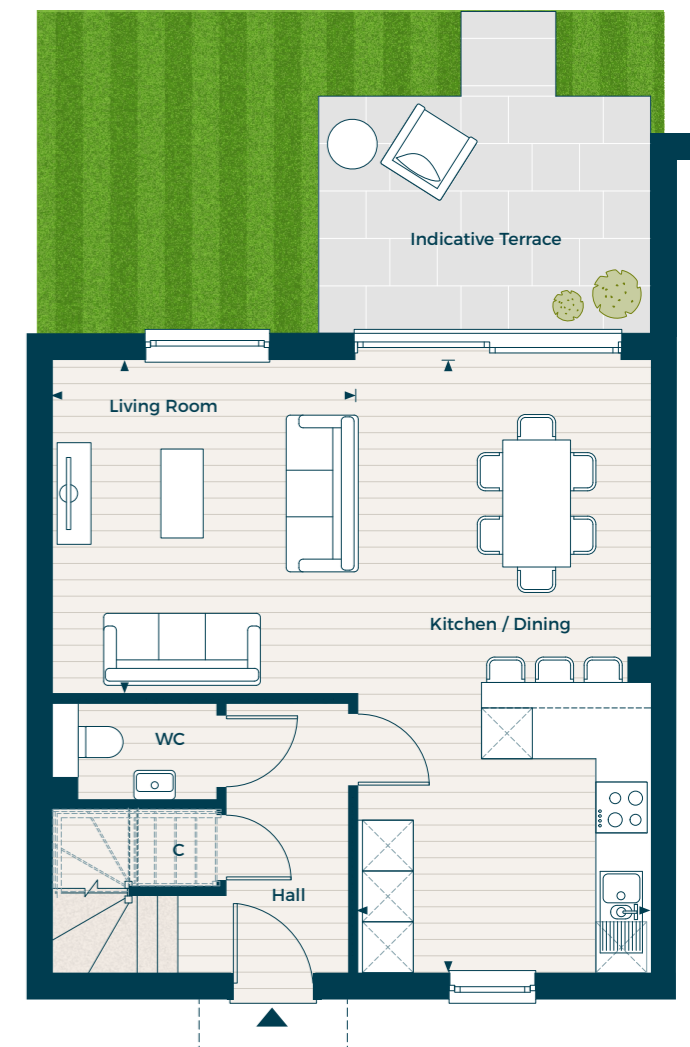
4.41m x 3.75m 14' 6" x 12' 4"

### Bedroom 2

3.19m x 2.66m 10' 6" x 8' 9"

### Bedroom 3

3.75m x 2.70m 12' 4" x 8' 10"



## Ground Floor

### Living Room

3.93m x 3.61m 12' 11" x 11' 10"

### Kitchen / Dining

7.23m x 3.46m 23' 9" x 11' 4"