

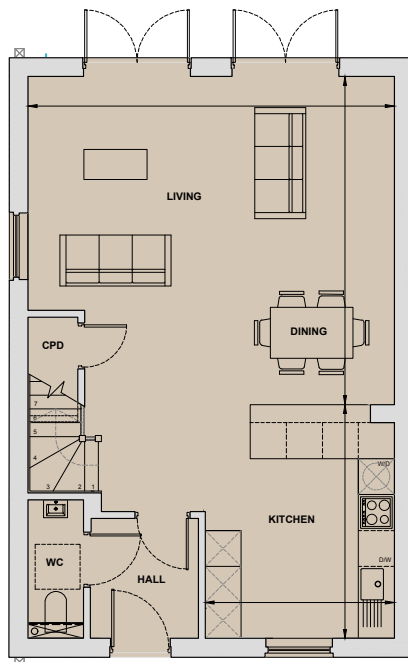
# Maple

3 Bedroom Home

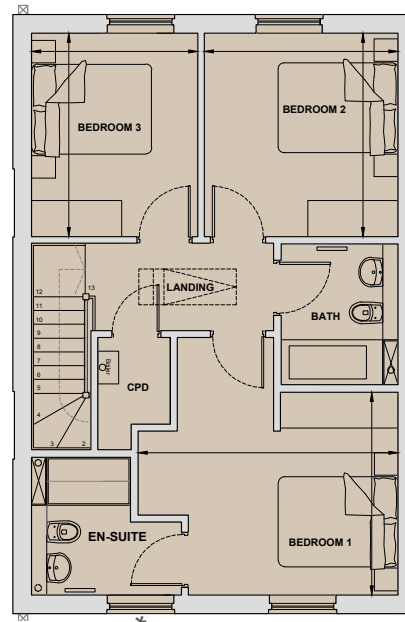
Plots 1, 7\*, 14, 15\*, 16 & 20\*

Living/Dining	6.10m x 5.47m	20'0" x 17'11"
Kitchen	3.15m x 3.90m	10'4" x 12'9"
Bedroom 1	4.33m x 3.38m	14'2" x 11'1"
Bedroom 2	3.22m x 3.39m	10'7" x 11'1"
Bedroom 3	2.76m x 3.39m	9'1" x 11'1"
<b>Total Internal Area</b>	<b>114.5 sq m</b>	<b>1,232 sq ft</b>

\*Handed to floorplan shown



Ground Floor



First Floor

\*No en-suite window to plots 1 & 7