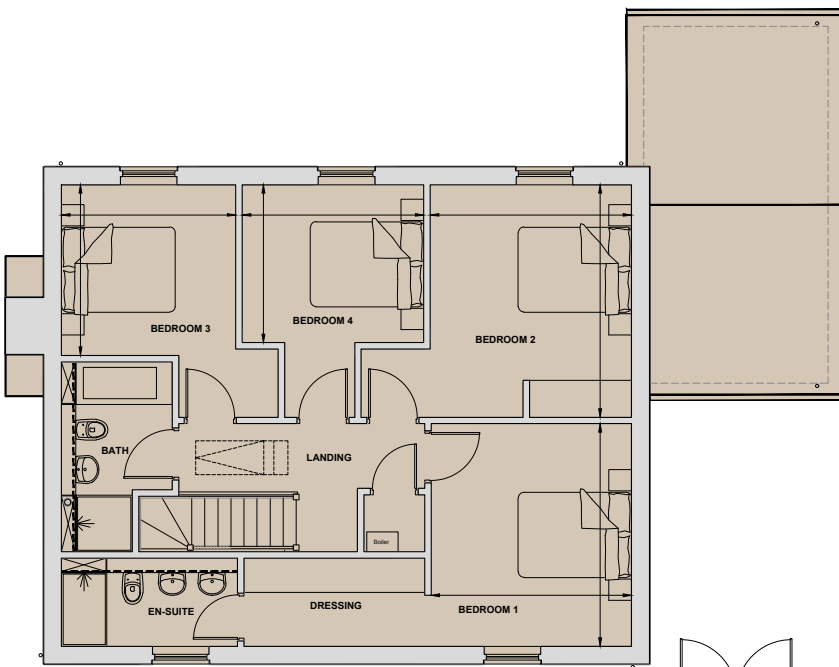


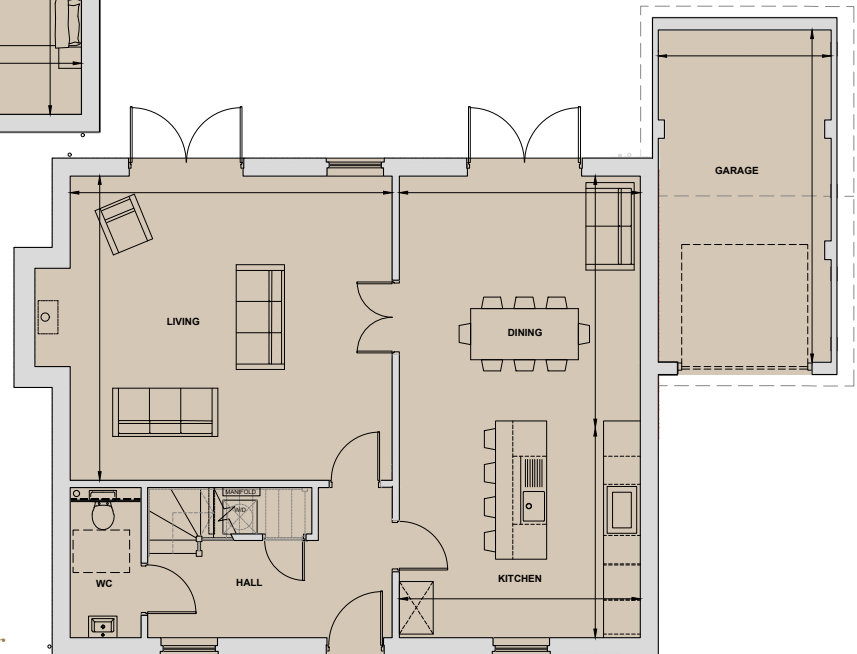
Chestnut

4 Bedroom Home
Plot 29

Living	5.67m x 5.37m	18'8" x 17'7"
Kitchen	4.25m x 3.70m	13'11" x 12'2"
Dining	4.25m x 4.44m	13'11" x 14'7"
Bedroom 1	3.53m x 3.92m	11'7" x 12'11"
Bedroom 2	3.55m x 4.10m	11'8" x 13'6"
Bedroom 3	3.07m x 3.01m	10'1" x 9'11"
Bedroom 4	3.20m x 2.79m	10'6" x 9'2"
Garage	3.05m x 5.86m	10'0" x 19'3"
Total Internal Area	163.5 sq m	1,760 sq ft



First Floor



Ground Floor