

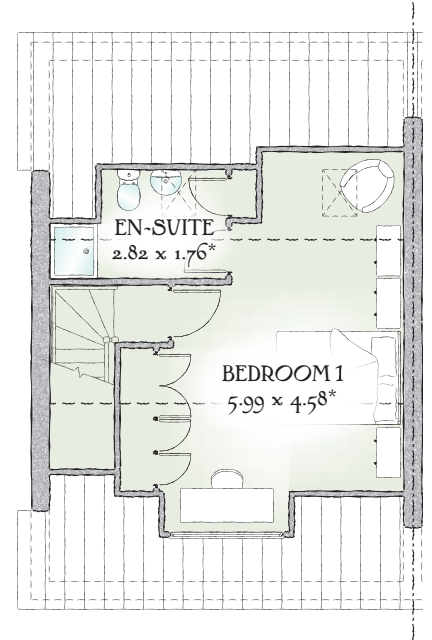
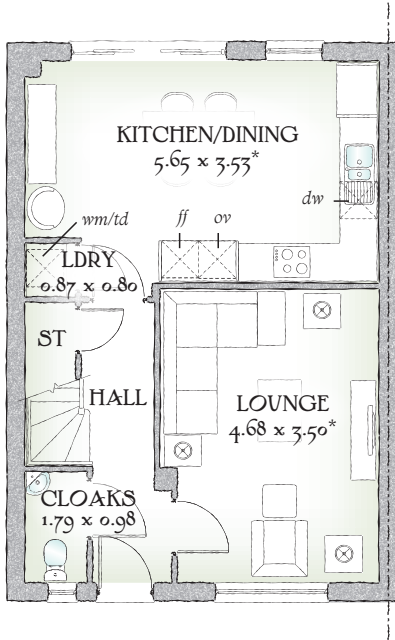


York

FOUR BEDROOM HOME



 REDROW



Though understated and simple from the outside, within you'll find a different level of luxury living, rising to new heights in the roof with a master bedroom suite that is so stylish and spacious you may never want to leave.

FOUR BEDROOM HOME

GROUND FLOOR

Lounge	15'4" x 11'6"	4.68 x 3.50 m*
Kitchen/ Dining	18'6" x 11'7"	5.65 x 3.53 m*
Cloaks	5'10" x 3'3"	1.79 x 0.98 m
Laundry	2'10" x 2'7"	0.87 x 0.80 m

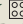

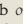
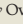
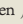
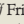
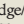
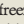
FIRST FLOOR

Bedroom 2	15'5" x 9'1"	4.70 x 2.77 m*
Bedroom 3	11'8" x 10'2"	3.56 x 3.10 m*
Bedroom 4	10'9" x 9'2"	3.27 x 2.80 m*
Bathroom	8'1" x 5'10"	2.47 x 1.78 m

SECOND FLOOR

Bedroom 1	19'8" x 15'0"	5.99 x 4.58 m*
En-suite	9'3" x 5'9"	2.82 x 1.76 m*

Customers should note this illustration is an example of The York house type. All dimensions indicated are approximate and the furniture layout is for illustrative purposes only. Homes may be 'handed' (mirror image) versions of the illustrations, and may be detached, semi-detached or terraced. Materials used may differ from plot to plot including render and roof tile colours. Detailed plans and specifications are available for inspection for each plot at our Sales Centre during working hours and customers must check their individual specifications prior to making a reservation.

KEY  Hob  Oven  Fridge/freezer  Washing machine space  Dishwasher space  Tumble dryer space  Hot water cylinder  ST Cupboard

* Max dimensions Note: Bedroom dimensions taken into wardrobe recess. All wardrobes are subject to site specification. Please see Sales Consultant for further details.

Traditional homes, built the way you remember